

```

5A5C3.1 14 SIKLWPPSQTRLLVERMANNLST..PSIFTRK..YGLSKEEARENAKQIEEVACSTANQ.....HYEKEPDGDGSSAVQLYAKECSKLIILEVLK 10
B4F917.1 13 SIKLWPPSESTRIMLVDRMTNNLST..ESIFSRK..YRLLGKQEAHENAKTIEELCFALADE.....HFREEPDGDGSSAVQLYAKETSKMMLEVLK 10
A9S1V2.1 23 VFKLWPPSQGTREAVRQKMALKLSS..ACFESQS..FARIELADAQEহারাইEEVAFGAAQE.....ADSGGDKTGSAVVMVYAKHASKLMLETLR 10
B9GSN7.1 13 SVKLWPPGSTRMLMVERMTKNFIT..PSFISRK..YGLLSKEEAEEEDAKKIEEVAFAAAANQ.....HYEKQPDGDGSSAVQIYAKESSRRLMLEVLK 10
Q8H056.1 30 SFSIWPPTQRTRDAVVRRLVDTLGG..DTILCKR..YGAVPAADAEPARGIEAEAFDAAA..SGEAATASVEEGIKALQLYSKEVSRRLDFVK 12

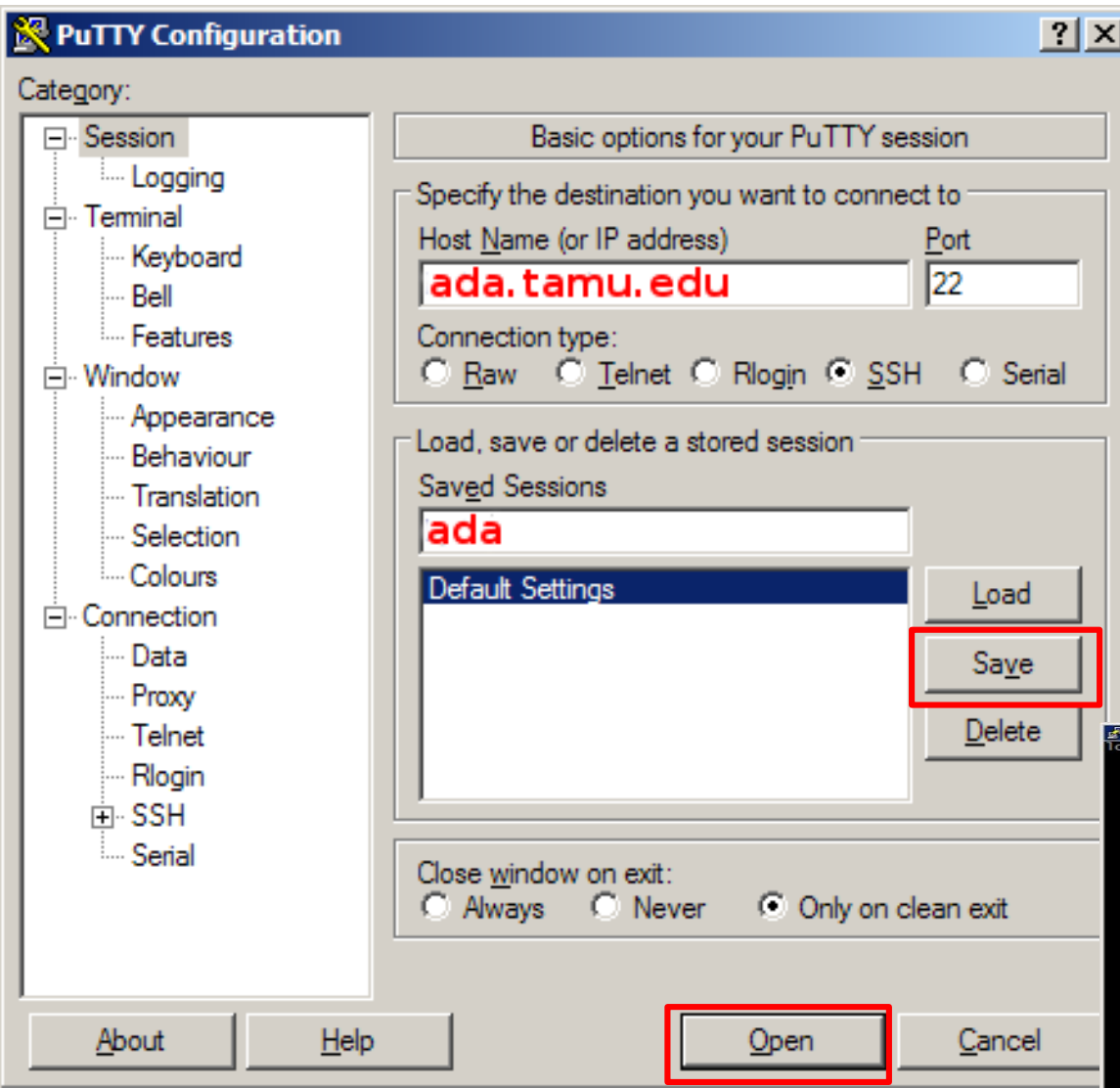
```

# Bioinformatics Workshop - Agenda

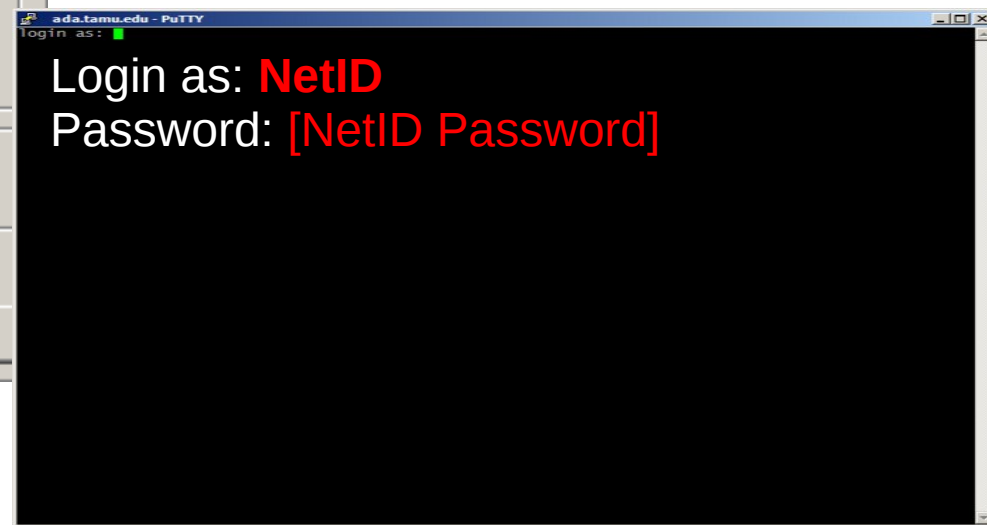
Time	Subject	Speaker
1:00 ~ 2:00 PM	Introduction to Linux Introduction to Using the Ada Cluster	T. Mark Huang, Ph.D.
2:00 ~ 3:00 PM	Introduction to Python	Yang Liu, Ph.D.
3:00 ~ 3:10 PM	Break	
3:10 ~ 5:00 PM	Next Generation Sequencing Data Analysis on the Ada Cluster	Michael Dickens, Ph.D.

Slides available at <http://hprc.tamu.edu/shortcourses/Workshop-Bioinformatics/>

# Log in Ada with Putty

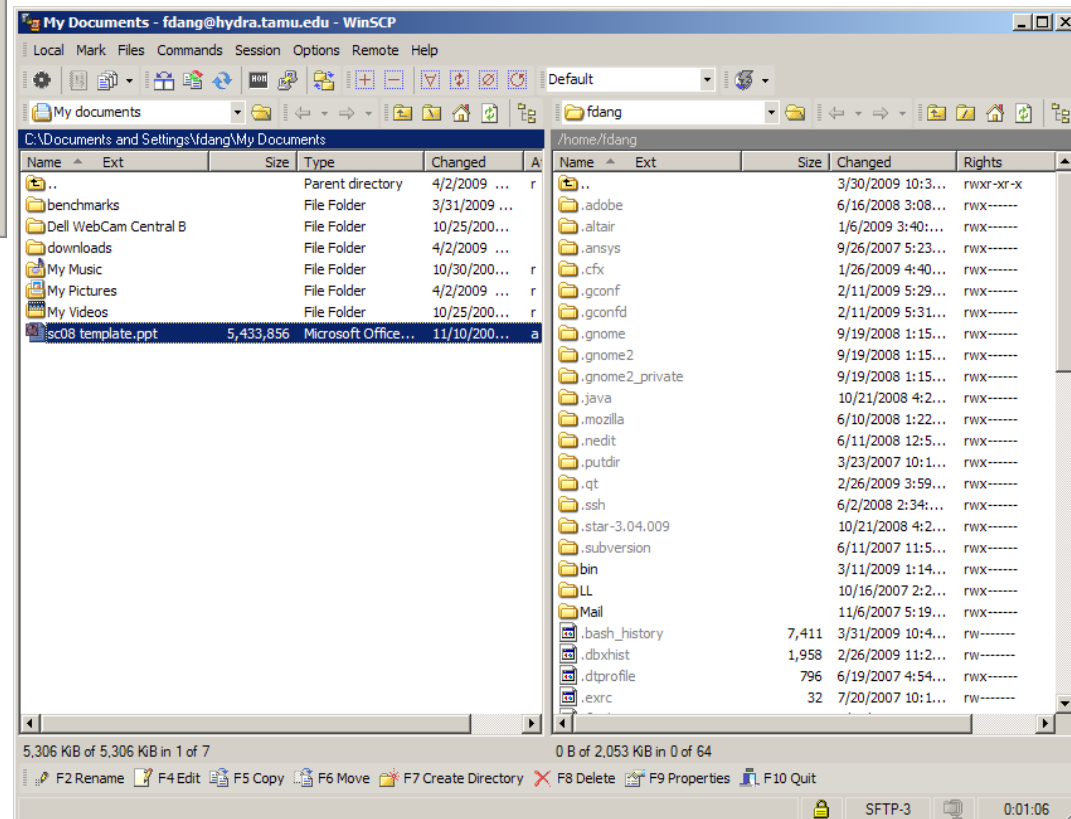
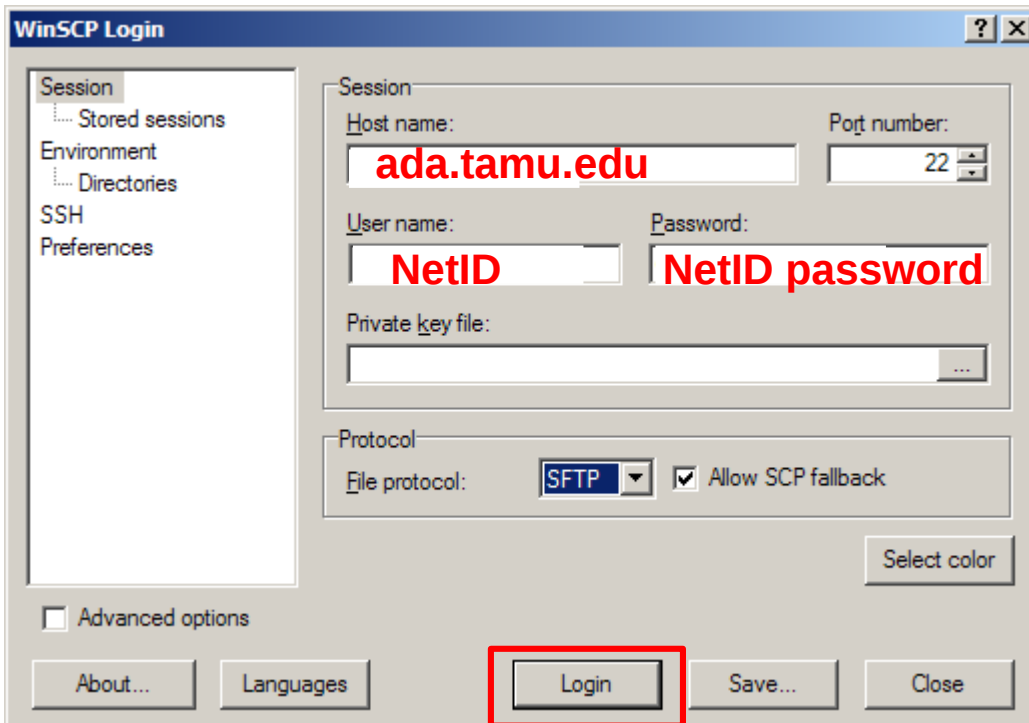


- Enter *ada.tamu.edu* as host name
- Save session if needed
- Login Ada cluster with
  - User ID: *NetID*
  - Password: *NetID password*



# File Transfer with WinSCP

- Enter *ada.tamu.edu* as host name
- Enter
  - User name: *NetID*
  - Password: *NetID password*



Drag and drop to transfer files